

INSTRUCTIONS FOR UPGRADE SOFTWARE DATA LOGGER RPM-416

Step 1: Preparing a Memory Card

1. Download the firmware file from the site www.novatek-electro.com on your computer.

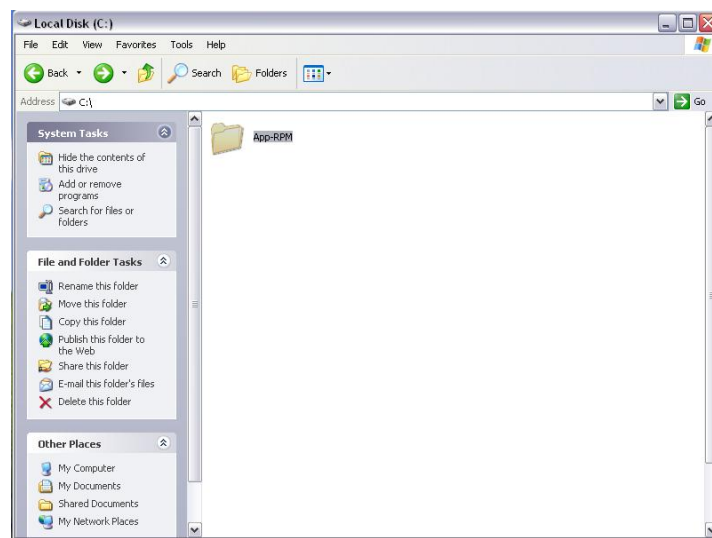
File name : FWU-RPM416EN-V17.zip

where EN-V17 – software version.

2. Install the memory card in the memory card reader on your computer.

Unzip files from the archive to the root of the memory card.

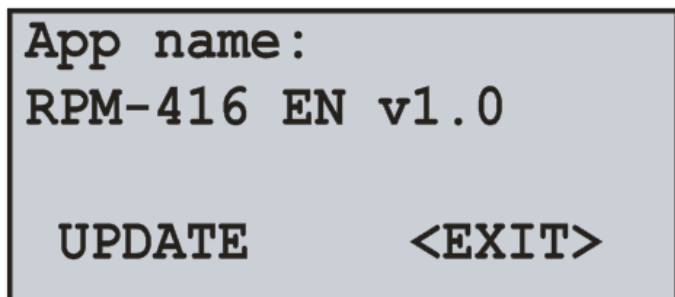
3. Make sure that the folder containing the files of software has been added to the card.



4. Safely remove the memory card by clicking on the "Safely Remove" in the taskbar.

Step 2: Update the software

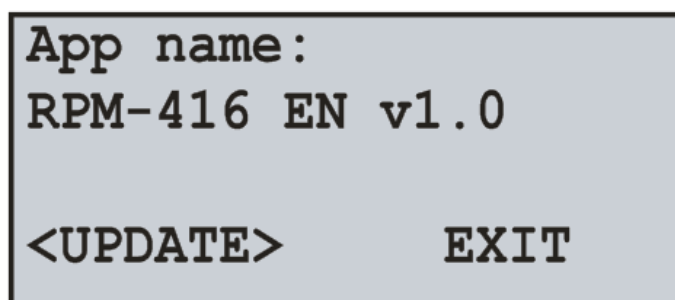
1. Install the memory card in the RPM-416.
2. On RPM-416 by holding down the middle button on a supply voltage.
3. If RPM-416 detects the correct version of the software, the display shows.



App name:
RPM-416 EN v1.0

UPDATE <EXIT>


4. Left button to set the cursor to "UPDATE".



App name:
RPM-416 EN v1.0

<UPDATE> EXIT

5. Press the middle button to start the update process.



Write new app...

[#####]

6. Upon completion of the update process PRM-416 is turned off, then on again with the updated software.

CAUTION

During the software update:

- ❖ not remove the memory card;
- ❖ do not disconnect the unit's power.

Removing the memory card while the software update or power will cause an error updating or damage to the Data logger PRM-416. Novatek-Electro guarantee does not apply to devices that are damaged during the software update.